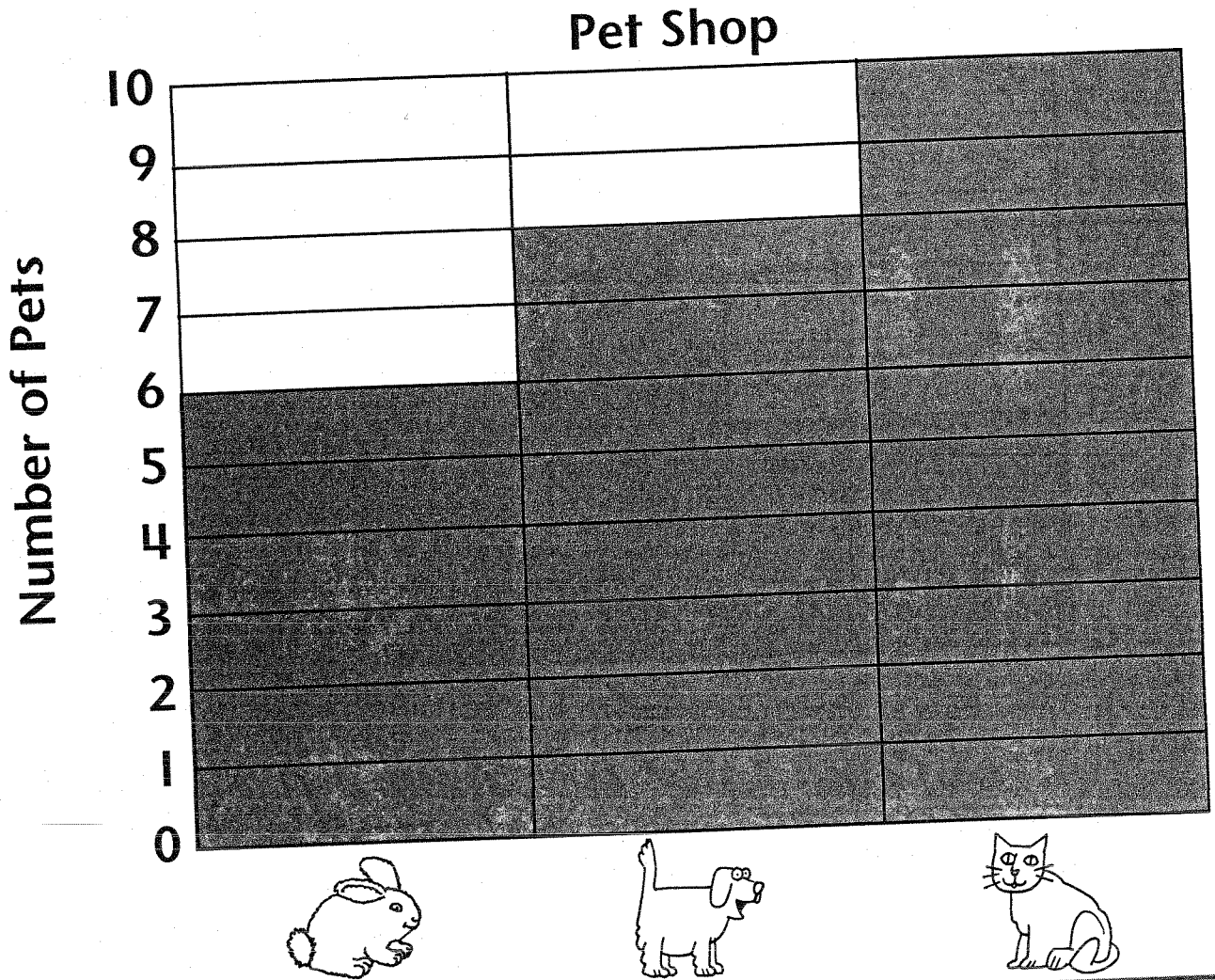


Name _____

Problem Solving Plan

1. Understand 2. Decide 3. Solve 4. Look back

STANDARD



Look at the graph. Ring the number.

Think How many?

1



6

7

8

2



7

8

9

3



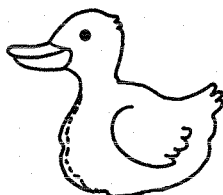
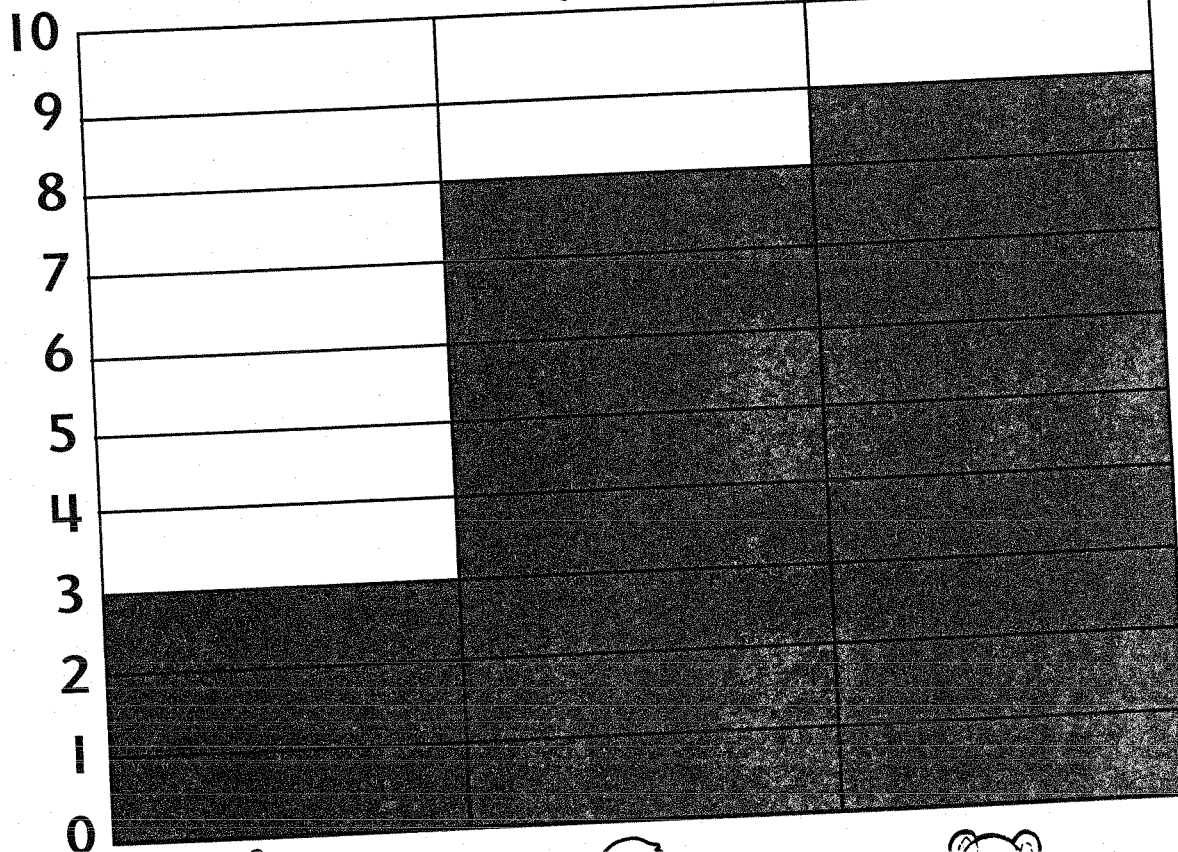
8

9

10

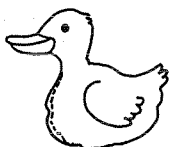
Toy Shop

Number of Stuffed Animals



Look at the graph. Ring the number.

Think How many?



6

7

8

Extend Your Thinking

Ring yes or no.

2

Are there more



than



?

yes no

3

Are there more



than



?

yes no

Name _____

Ask 5 children to vote.
Use counters to show votes.

Favorite Things to Do



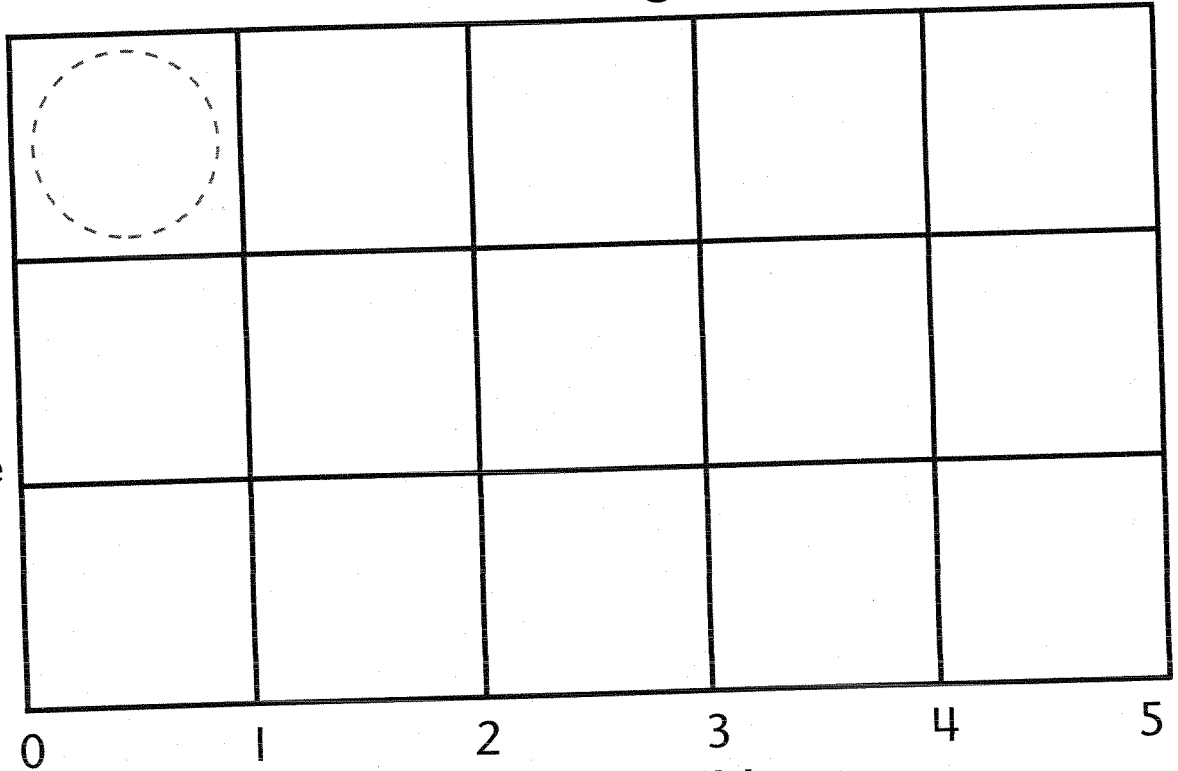
ride a bike



jump rope



read



Number of Children

Use the graph.
Write the number of children who like each activity.

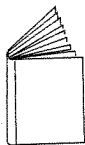
1

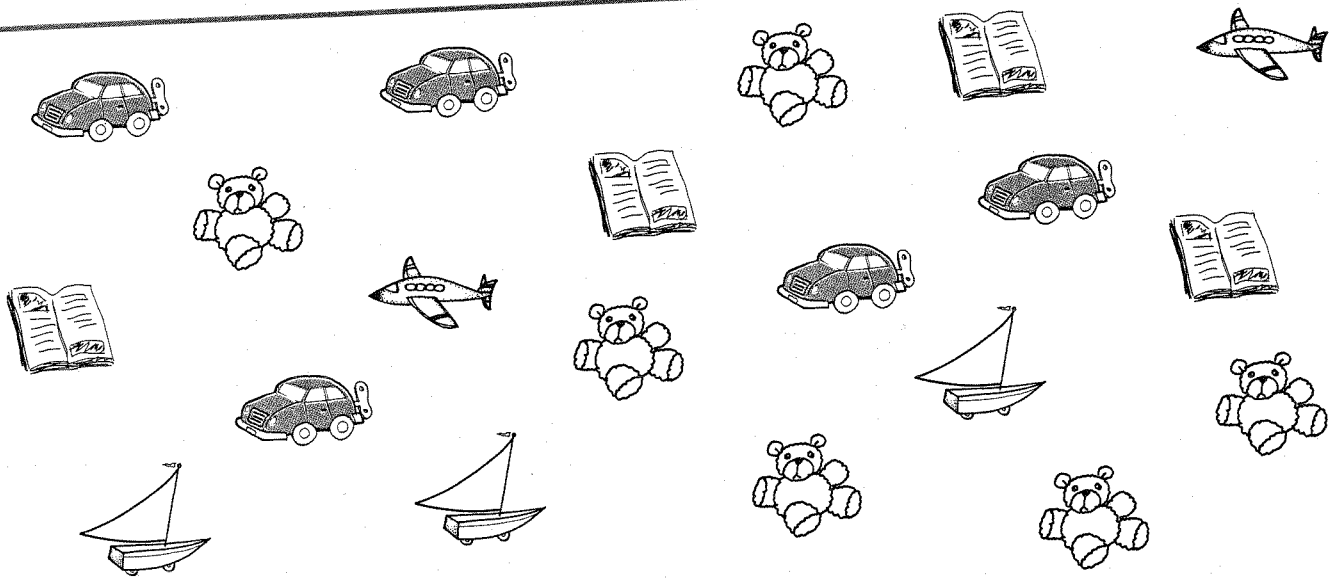


2



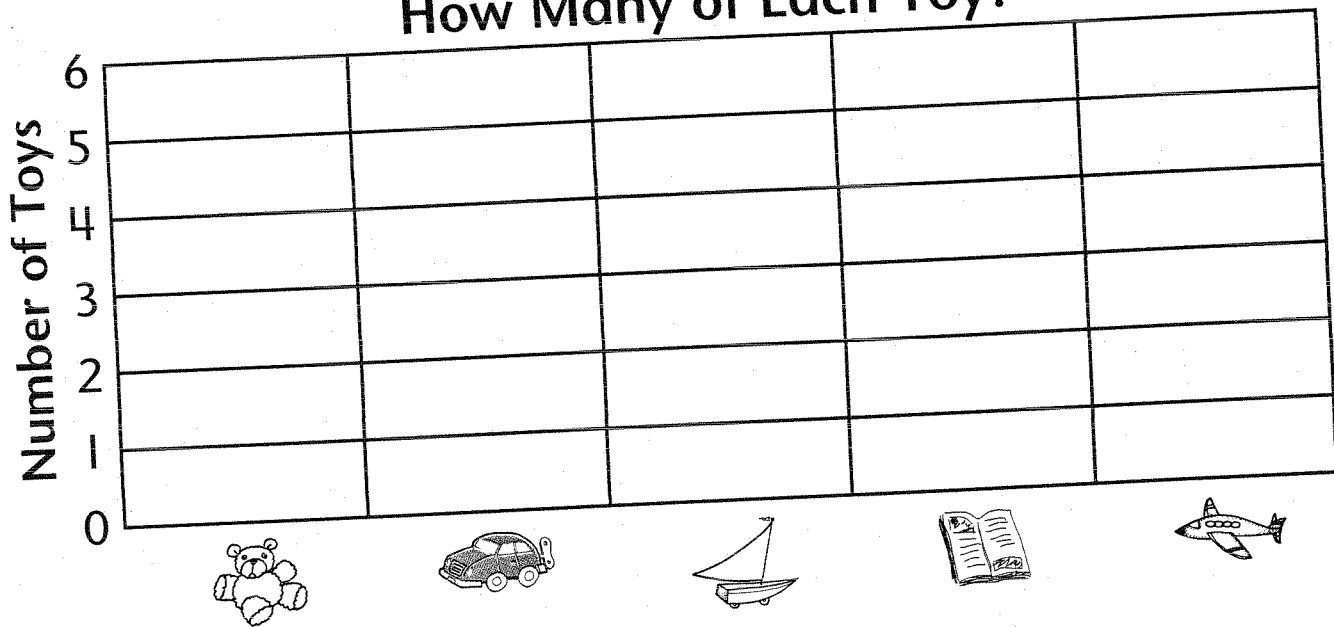
3





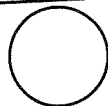
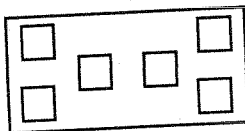
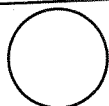
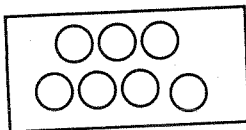
Color the graph to show the number of each kind of toy.

How Many of Each Toy?



Quick Check

How many?



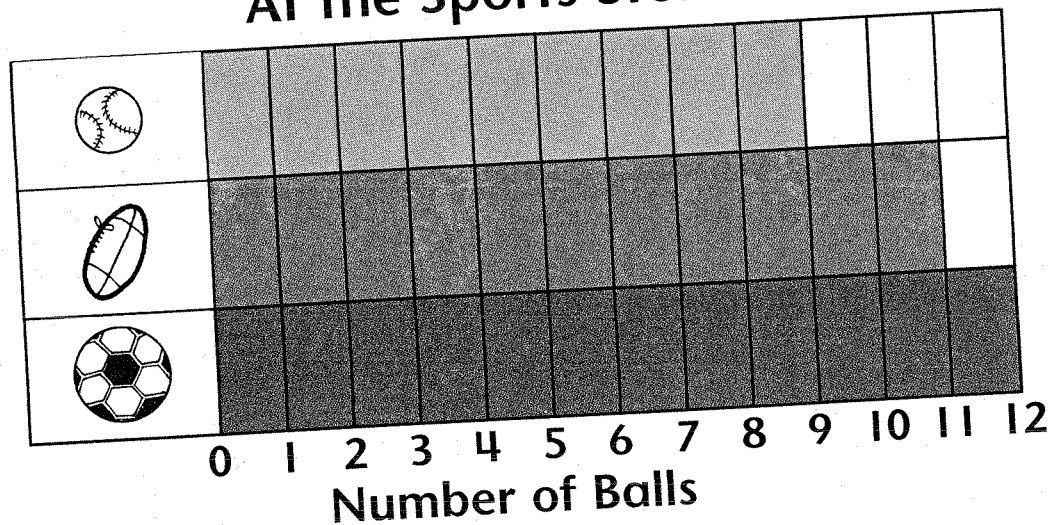
Name _____

Problem Solving Plan

1. Understand 2. Decide 3. Solve 4. Look back

Use the graph.
Write how many.

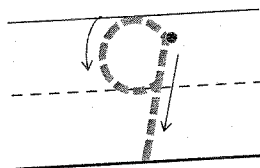
At the Sports Store




Think At what number does the bar end?

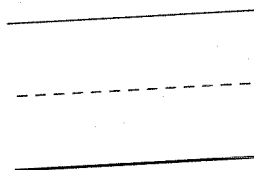
1

How many  ?



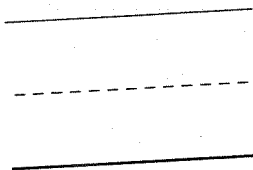
2

How many  ?

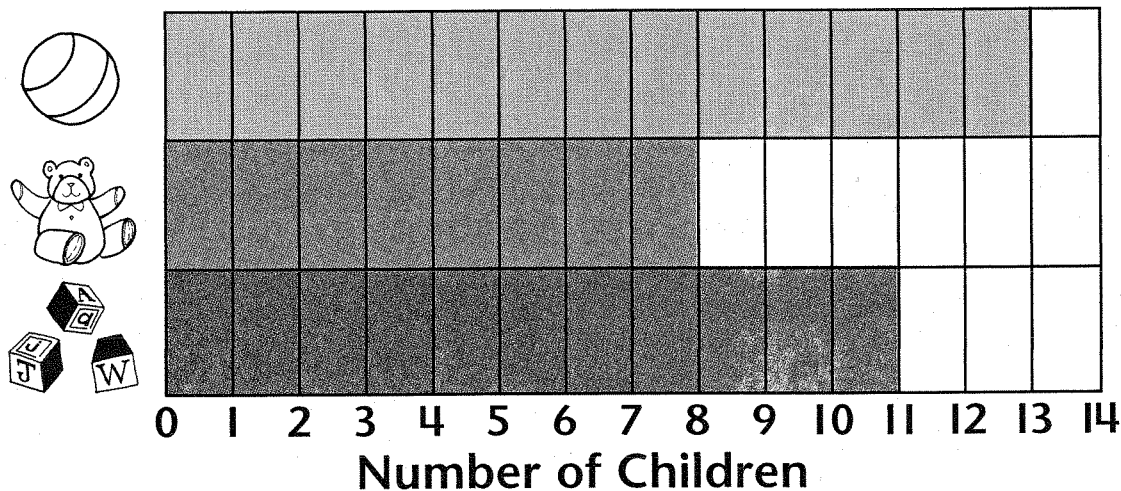


3

How many  ?

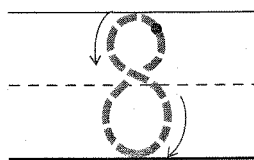


Favorite Toy

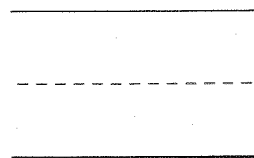
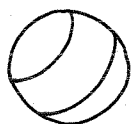


Write how many children like each toy.

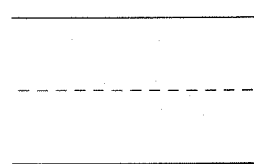
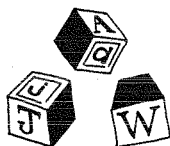
1



2



3



Extend Your Thinking

Ring the answer.

